

Greater Harvey Historical Society – Kinmount Heritage Centre

Newsletter July 2019

Volume 2019 Issue 2

President's Message

Our open house for Galway Hall was a great success. Thank you to all who attended and special thanks to some of our council members who came. Sorry I could not be there to greet our members and council.

We are hoping to have a very good year, with a long list of things to accomplish. The foremost is the completion of the Galway Book. Many people have been asking about the book and I think it will be a great success.

We will be open at Kinmount Heritage every Thursday from 10:30 a.m. - 2:00 p.m. and at Galway Hall the 2nd and 4th Fridays until November 1st. Winter hours are by appointment. Please call 705-488-9952 and someone will get back to you as soon as possible.

If you have not renewed your membership please do so. Thank you. For those who have family trees with us on ancestry your membership must be renewed by August 11, 2019 as we need the room for future trees.

Thank You
Barbara Cain
G.H.H.S. President



How do You Find Us?

- Locations:** 1) Galway Hall, 388 Galway Rd., Kinmount
Open 2nd and 4th Fridays 10:00 – 2:00
2) Kinmount Railway Station, Downtown Kinmount
Open Thursdays 10:30 – 2:00
Call us at 705-488-9952 and leave a message

Executive Committee

**Barb Cain
President**

**Guy Scott
Vice-President**

**Margo Phillips
Secretary**

**Jim Walker
Treasurer**

**Brenda Schryer
Director**

**Kathy Lee
Director**

**Janice Stange
Director**

**Ruthann Allen
Volunteer**

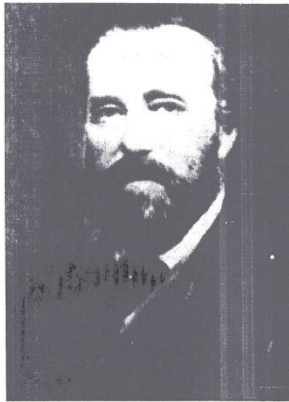
Does anyone know these Fellows???



If you do, please let us know!!!

Historical Sketch.....

Mossom Boyd



In the 1860's Mossom Boyd kept buffalo on Boyd Island in Pigeon Lake, Harvey Township. He tried unsuccessfully to crossbreed them with Hereford cattle. Records at the National Archives suggest that Mossom Boyd purchased Big Island in Pigeon Lake with the deal being finalized in 1873

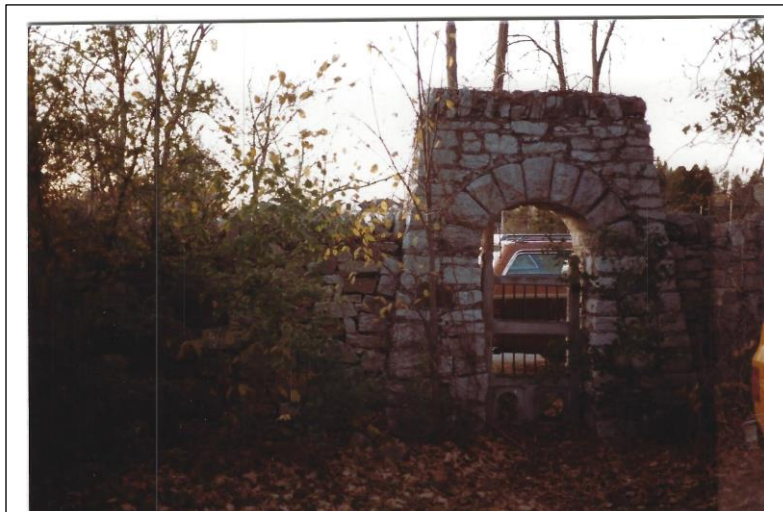
Buffalo are excellent swimmers and there are many stories of the buffalo swimming across Pigeon Lake and being found on distant shores. Mossom and/or a hired hand would travel miles to get to the far shore of Pigeon Lake to retrieve the Buffalo.

The old barn on the Boyd Farm had a watch tower on top so the Boyd family could observe Boyd's Island and count the buffalo.

Mossom Boyd 1814 - 1883
*Photograph courtesy of the National Archives of Canada
Big Island see; Reel C-11108, Volume 1906, file 2291, Indian Affairs*



Top picture: decorative stair post
Right picture: Original vaulted arch
at entrance of Boyd Mansion.





GRAMMA VENT'S WILD RASPBERRY BREAD PUDDING

Pam Dickey U.E.

**10 cups wild raspberries,
cleaned and dried
2 cups sugar**

**12 slices homemade white
bread
2 cups heavy cream**

In large bowl, sprinkle sugar over raspberries. Toss berries very lightly until all sugar has dissolved. Cover and set aside.

Cut slice of bread to fit bottom of deep 2 quart bowl. Trim 8 or 9 slices of bread into wedges about 4 inches at the top and 3 inches across the bottom. Line sides of bowl with wedges, overlapping each one by about 1/2 inch. Pour fruit into bowl and cover top completely with the rest of the bread. Cover top of bowl with a large plate and place a weight on top of plate. Place in refrigerator for at least 12 hours. Remove mould by quickly inverting it onto a chilled serving plate. The mould should slide out easily.

Whip cream in a large chilled bowl until it holds its shape. With a spatula, cover on the outside and top. Serve chilled.

Old Disease Names Frequently found on Death Certificates

Erysipelas - Contagious skin disease, due to Streptococci with vesicular and bulbous lesions

Extravasted blood - Rupture of a blood vessel

Falling sickness - Epilepsy

Fatty Liver - Cirrhosis of liver

Fits - Sudden attack or seizure of muscle activity

Flux - An excessive flow or discharge of fluid like hemorrhage or diarrhea

Flux of humour - Circulation

French pox - Syphilis

Gathering - A collection of pus

Glandular fever - Mononucleosis

Great pox - Syphilis

Green fever / sickness - Anemia

Grippe/grip - Influenza like symptoms

Grocer's itch - Skin disease caused by mites in sugar or flour

Heart Sickness - Condition caused by loss of salt from body

Heat Stroke - Body temperature elevates because of surrounding environment temperature and body does not perspire to reduce temperature. Coma and death result if not reversed

Hectical Complaint - Recurrent fever

Hematemesis - Vomiting blood

Hematuria - Bloody urine

Hemiplegy - Paralysis of one side of body

Hip Gout - Osteomyelitis

Horrors - Delirium tremens

Hydrocephalus - Enlarged head, water on the brain

Hydropericardium - Heart dropsy

Hydrophobia - Rabies

We were at the Highland
Games in Kinmount on
July 13



It was a wonderful day, lots of dancing and bagpipes and authentic throwing events that wowed the crowd. We had lots of people looking for their Scottish family crests and tartans.



Trent Lakes Yesterday

from Illustrated Atlas of Peterborough County
1825-1875 - published by The Peterborough
Historical Atlas Foundation Inc c1975

In the 1870s and 1880s an illustrated atlas for Peterborough County was never published although one was prepared for many of the Counties of Ontario. The old atlases were a form of vanity press, depending substantially on the fees residents were willing to pay to have their biographies, portraits or sketches of their farms or homes included. Much of Peterborough County was sparsely settled and potential revenue would not have been sufficient to make such a publication economic at that time.

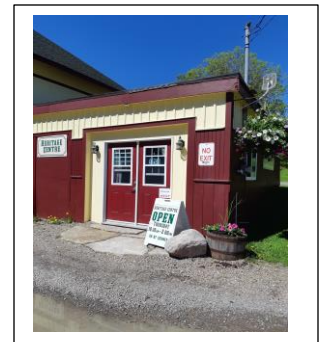
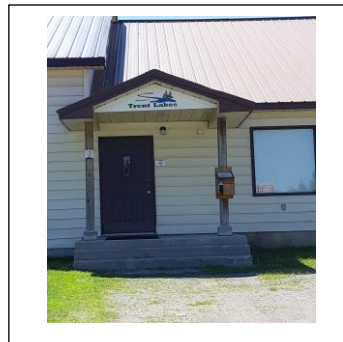
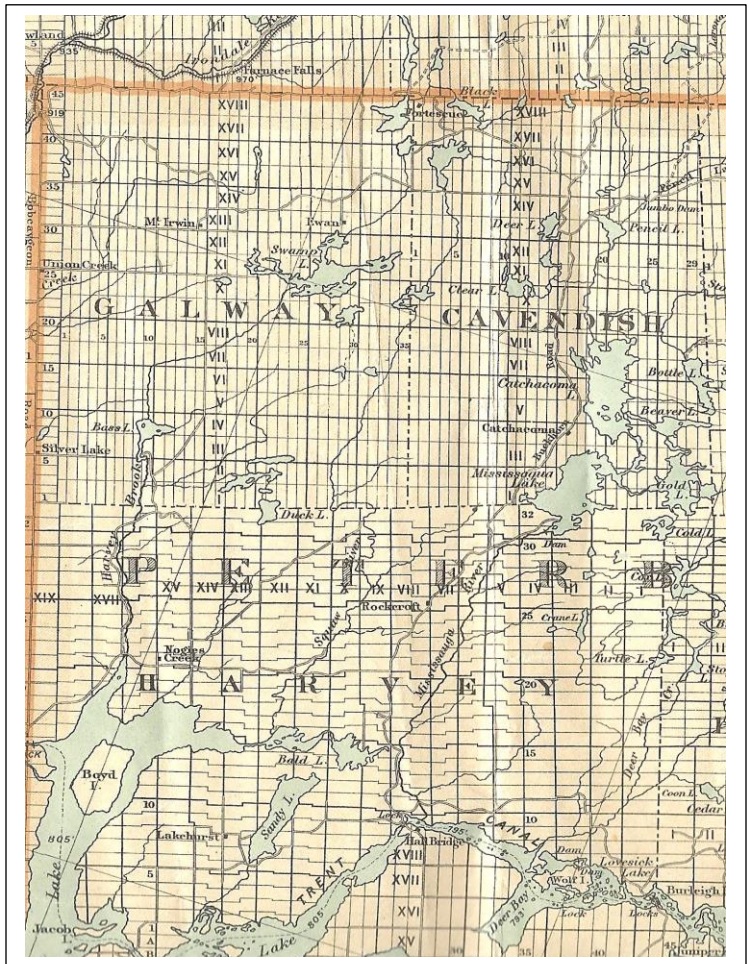
In 1975 an attempt was made to fill the gap. The following facts come from that atlas.

Peterborough County has been through several political metamorphoses since it was known as the "Back Lakes" district.

Fifteen townships make up the County, eight in the south and west with independent Councils, and seven in the less developed northern and eastern sections joined with their immediate neighbours to form three municipal governments. Until 1841, when the Colborne District was established, Peterborough was part of the old Newcastle District. In October of that year, the area north of Rice Lake was separated from the Lake Ontario region known as "The Front", and the Colborne District was proclaimed, its borders containing all of the present Peterborough and Victoria Counties and part of Haliburton. The townships included in this political union were: Smith, Otonabee, Apsheol, North Monaghan, Ennismore, Douro, Drummer, Harvey, Burleigh, Anstruther, Chandos, Belmont, Methuen, Galway,

Cavendish, Verulam, Emily, Ops, Fenelon, Maniposa, Eldon, Bexley and Somerville.

In 1850 the Colborne District was reorganized into two political divisions, the northern part of which was known at first as Peterborough County, and in the following year the name was changed to the United Counties of Peterborough and Victoria. For a further ten years this political union continued with most of its power centred in Peterborough, but in 1861 Victoria was granted independent status. Haliburton County separated in 1874, drawing its twenty-three townships from both of the formerly United Counties, leaving the composition of townships in Peterborough County as it is today.



Kinmount Heritage – GHHS has 102 likes on



.....Are you one of them?

Contact Us !!

Email ghhs738@gmail.com

Phone/message (705) 488-9952

Private message (pm) through Facebook page - Kinmount Heritage-GHHS